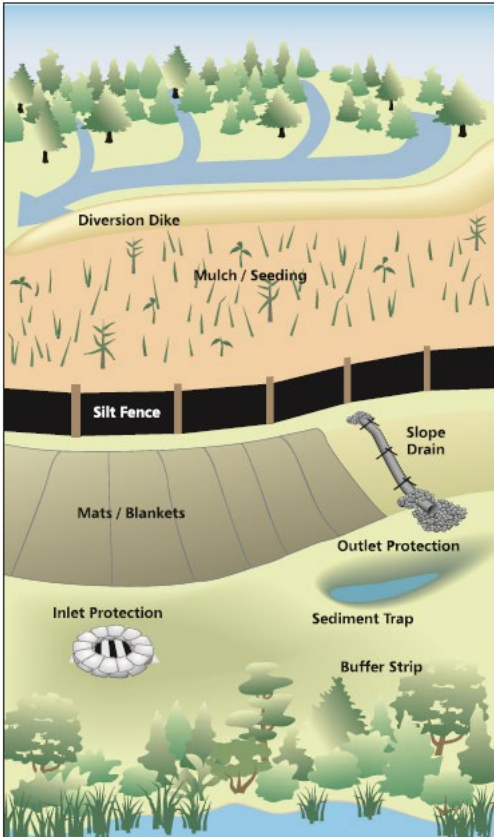


# CHECKLIST

Property owners (ultimately responsible person), Developers, and Contractors must ensure work performed on their site does not impact lakes, streams, and stormwater. It is their responsibility to prevent dirt and other sediments from leaving the site during construction. After construction is completed, they must also permanently stabilize the site through re-vegetation, landscaping or other means to ensure that sediment won't leave the site in the future. Valley County Code (VCC)

## Idaho Construction Site EROSION and SEDIMENT CONTROL

### FIELD GUIDE



## Basic Stormwater Best Management Practices at Construction Sites

- ☐ Name, signature and attached certification of BMP trained responsible person if in Riparian Area Overlay: \_\_\_\_\_

VCC 9-6-6

[Call (208)382-7115 for Information]

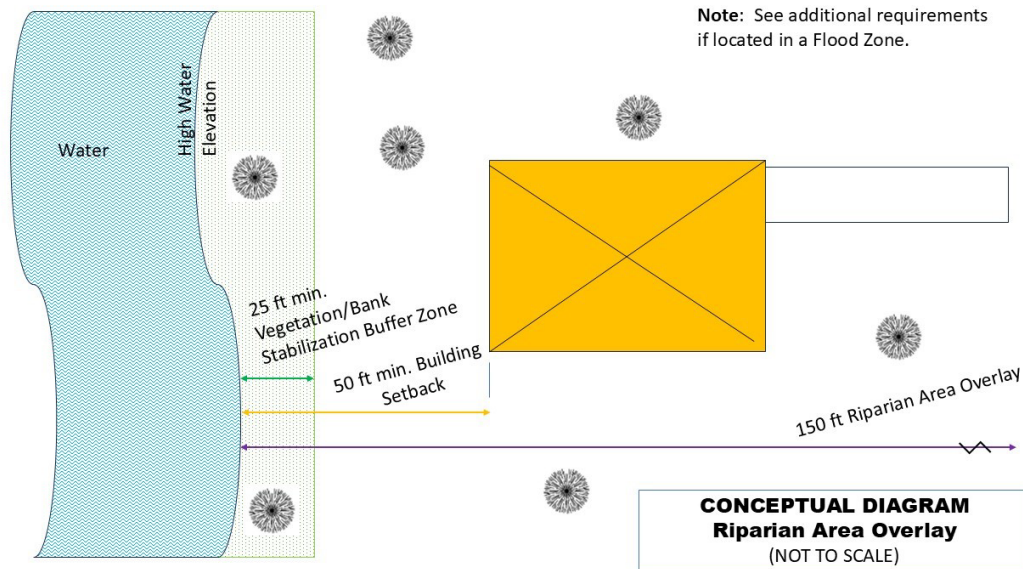
- ☐ Review and know the pertinent Codes and Permit Requirements. No construction activity shall take place without a valid Permit. Land disturbance greater than 1 acre requires a formal State of Idaho Stormwater Pollution Prevention Plan (SWPPP).
- ☐ Contact Valley County after BMPs are in place ... **BEFORE** grading begins. (208)382-7114 (building permits) or (208)382-7115 (placement permits, sheds, containers, ponds, berms, etc.) VCC 9-4-3-4-F
- ☐ Limit Land Disturbance, i.e. establish clearing limits, provide dust control, and limit equipment travel ways.
- ☐ Stormwater detention basins, retention basins, swales or other techniques shall be used when recommended or required by the Valley County Engineer. VCC 9-6-6-C.3
- ☐ Preserve Natural Vegetation, i.e. maintain 25 ft minimum vegetative buffer zones towards waterways. VCC 9-4-3-2.2
- ☐ Increase Water Infiltration, i.e. vegetative drainages and bio-detention basins. i.e. direct water into tree wells or gardens. Use open paver stones or gravel pathways (these are considered pervious uses).
- ☐ Use Man-Made Erosion Perimeter Controls, i.e. silt fences and/or

wattles, pave or gravel roadways.

- ☐ Protect Slopes, i.e. re-establish cover and bench/dikes/berm to reduce flow velocity.
- ☐ Use Downspouts and Swales to Redirect Stormwater, i.e. rock or vegetation lined with check dams.
- ☐ Capture Sediment-laden water, i.e. silt fences, detention ponds or wetland filters
- ☐ Use Storm Drain Filters and Protection like vehicle track-out controls.
- ☐ Create Special Bays for Equipment Fueling & Washouts
- ☐ Properly Store and Cover Worksite Materials
- ☐ Train Employees and Subcontractors on procedures and provide sanitation facilities
- ☐ Conduct Frequent Inspections
- ☐ Stabilize Work Zones after construction has ceased
- ☐ Do NOT Fertilize in a Riparian Overlay Area VCC 9-4-3-2-C.4

## Recently Updated - Miscellaneous Standards:

- Fire Departments must approve driveways if over 150-ft from an access road. VCC 6-1-9-E.3
- 35% Lot Coverage: structures and impervious surfaces, such as driveways, patios, etc. VCC Title 9 Definitions
- Setbacks from high water lines are 50-ft for residential uses and 100-ft for all other uses. VCC 9-4-3-2-C
- There shall be no filling or dredging of lake bottoms, rivers, or wetlands without proper jurisdictional permits, i.e. IDWR, USACE, Valley County, etc. VCC 9-6-6
- There shall be no excessive clearing of vegetation. VCC 9-6-6



- 100-ft min. Building Setback for all other buildings.

## Potential Code Violations for Not Implementing Best Management Practices

- Valley County Titles 6, 9, 10 and 11.
- Idaho Water Quality Standards (IDAPA 58.01.25, IDAPA 58.01.02.050, IDAPA 58.01.051, IDAPA 58.01.02.350, Idaho Statute 39-126, Idaho Statute Title 39-3610 and IDAPA 58.01.02 080, et al). Stream Channel Protection Act (Title 42, Chapter 38, Idaho Code).
- Federal Clean Water Act 33 U.S.C. §1251 et seq. (1972)
- County Ordinances & Special Requirements
- Army Corps of Engineers for Wetlands Section 404 of the Clean Water Act

## BMP References:

- <https://www.epa.gov/npdes/stormwater-discharges-construction-activities>
- <https://www.co.valley.id.us/media/Departments/PlanningZoning/Stormwater.pdf>
- <https://www.deq.idaho.gov/permits/water-quality-permits-certifications/storm-water-permits/>